



National Cancer Institute

Addressing Social Risks in Cancer Care Delivery

Virtual Workshop | October 14, 15, and 18, 2021

Introduction

Thank you for choosing to participate in the Addressing Social Risks in Cancer Care Delivery Virtual Workshop. Together, we'll take our first steps in understanding the research gaps, challenges, and opportunities to advance social risk research in diverse cancer settings.

As partners in this dialogue, we consider your diverse experiences and perspectives to be vital as we explore the research needs and priorities for addressing social risks among cancer patients and survivors. Thus, in preparation for this workshop, we designed this worksheet to encourage your active participation in the conversation. We invite you to use this worksheet to record your observations and reflections about how health care organizations can address the social risks of cancer patients and survivors from a research, clinical, and/or community vantage point. This handout will not be collected, but you may find this worksheet helpful as a reference when asked to provide your input throughout the various workshop sessions.

Workshop Organization

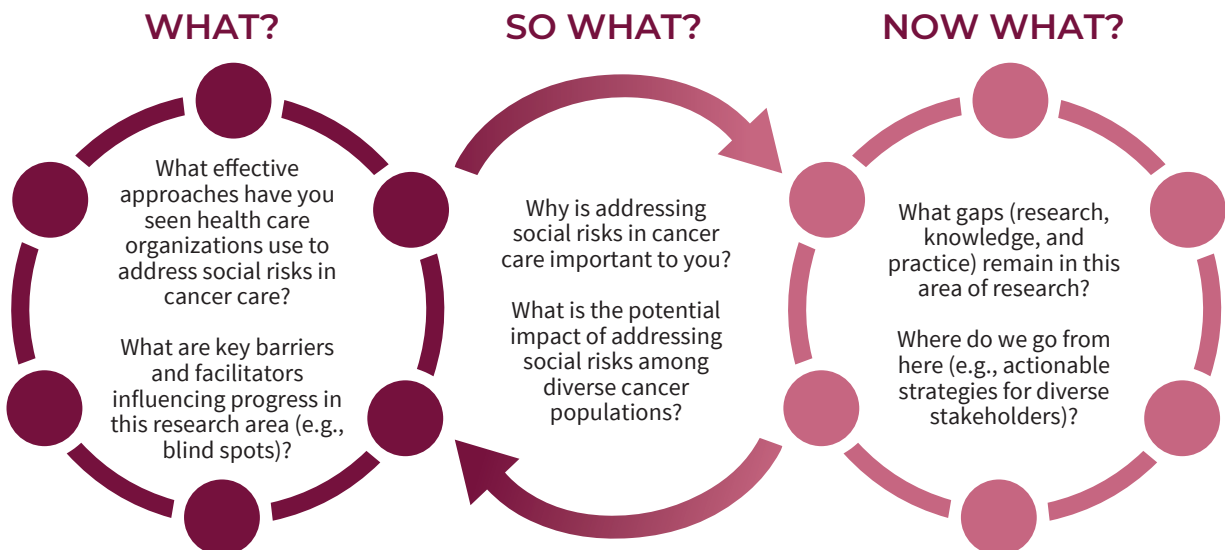
The workshop is organized by the five activities described in Figure 1.




Adapted from NASEM (2019) *Integrating Social Care into the Delivery of Health Care: Moving Upstream to Improve the Nation's Health*.

Worksheet Guidance

Throughout this workshop, we hope that you feel inspired and collectively ask WHAT–SO WHAT–NOW WHAT.



Please consider which A (s) are relevant to your vantage point as a clinician, researcher, community leader, cancer patient, survivor, or advocate and record your reflections on this worksheet. We'll ask for your input during the workshop on some of these questions.

						
		Awareness	Adjustment	Assistance	Alignment	Advocacy
WHAT?	Effective approaches currently used					
	Key barriers and facilitators					
SO WHAT?	Why is this important to you?					
	Impact of addressing social risks					
NOW WHAT?	Current gaps (research, knowledge, and practice)					
	Proposed actionable strategies					