



Advancing Equity in Data Sharing Through Authentic Partnerships

AI Richmond Executive Director

Community-Campus Partnerships for Health



Overview

Briefly will discuss:

- How I approach the work
- A framework for Authentic Partnerships in Data Sharing
- Data Sharing in a Post-Pandemic environment



About CCPH

Mission to promote health equity and social justice through partnerships between communities and academic institutions.

Values: we view health broadly, We emphasize partnership approaches, We believe in the fundamental need for healthier communities, and We are committed to social justice and strive to model equity and justice.



Principles of Partnership



Elements for an Authentic Partnership

Citation: Achieving the Promise of Authentic Community-Higher Education Partnerships: Community Partners Speak Out! CCPH, 2007



Select CCPH Principles of Partnership Associated with Data Sharing

- ✓ The Partnership builds upon identified strengths and assets, but also works to address needs and increase capacity of all partners.
- ✓ The Partnership balances power among partners and enables resources among partners to be shared.
- ✓ Partners share the benefits of the Partnership's accomplishments.
- ✓ Partnerships consider the nature of the environment within which they exist as a principle of their design, evaluation, and sustainability.
- ✓ The Partnership values multiple kinds of knowledge and life experiences.



What Is Data?

It's me.
It's my life.
It's my story.
It's my culture.
It's my community.

HAMILTON COUNTY,



MERCED COUNTY, CA



PITT COUNTY, NC



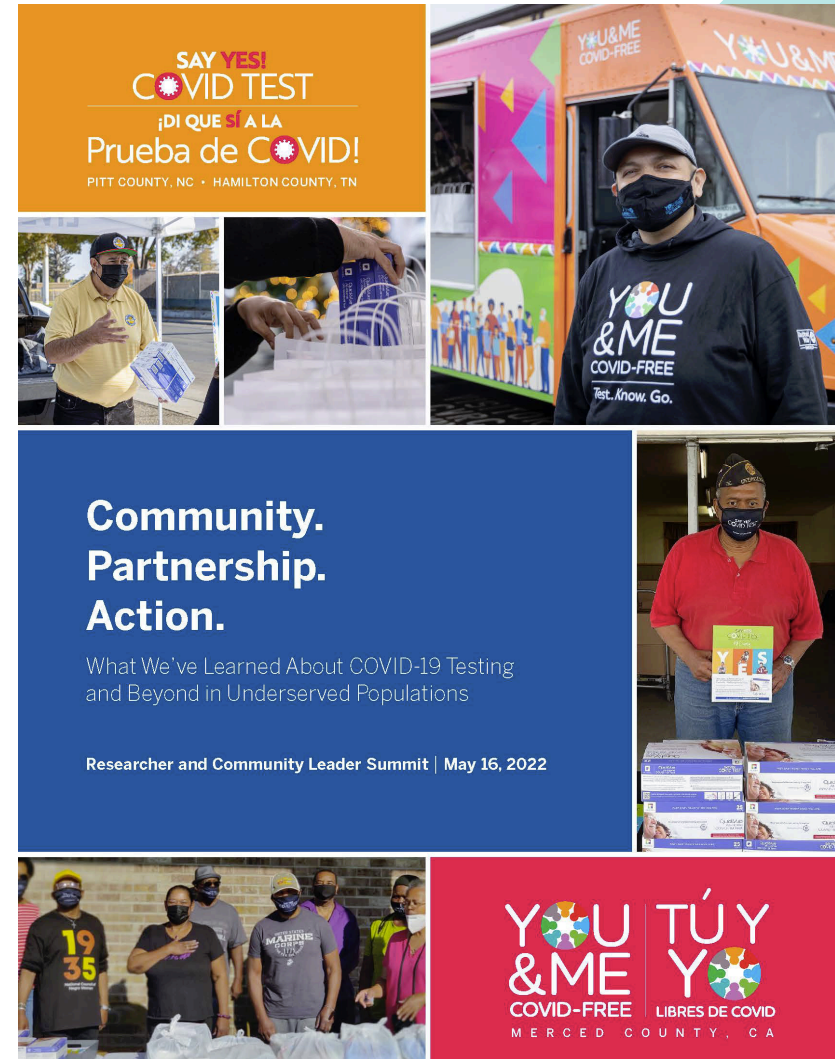


What's On My Mind

What is my data without my voice [my input]?

What is community level data without my community's voice [our voice]?

How does data sharing advance equity in my/our community?





Sense Making of the Data

TOTAL CASES

79,766,087

+30,073 New Cases

TOTAL DEATHS

974,277

+762 New Deaths



Sense Making of the Data

Al Richmond

al.richmond@ccphealth.org

ccphealth.org